

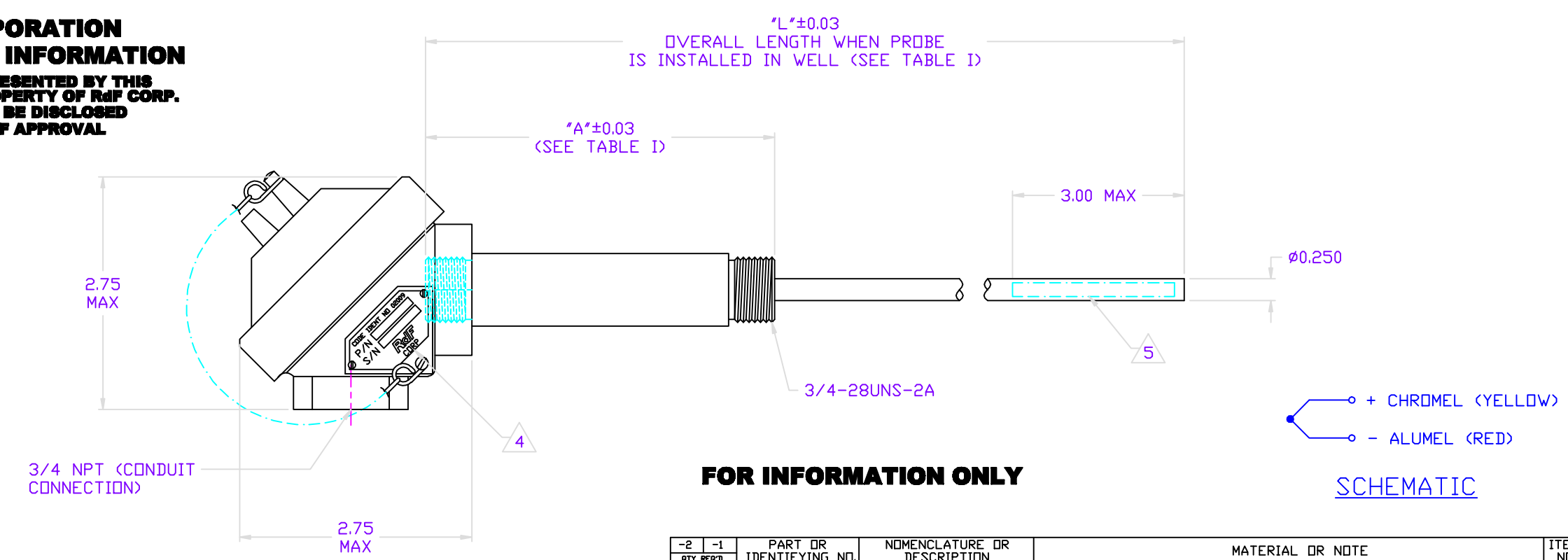
- NOTES:
- ELEMENT: TYPE K THERMOCOUPLE, STANDARD LIMITS OF ERROR PER ANSI C96-1-1964
 - OPERATING RANGE: PER TABLE I
 - MAXIMUM CONNECTION HEAD TEMPERATURE RANGE: 300°F
 - UNIT IS MARKED WITH THE FOLLOWING INFORMATION IN LOCATION SHOWN:
 CODE NO. 02009
 P/N 27700-X → DASH NO PER SALES ORDER
 S/N → SUPPLIED BY RdF
 RdF CORP
 - UNIT IS MARKED WITH THE FOLLOWING INFORMATION IN LOCATION SHOWN:
 RdF P/N 27700-X → DASH NO PER SALES ORDER
 TCEK-[-]-[-] TW, S/N[-] → SUPPLIED BY RdF
 CLASSIFICATION PER TABLE I
 - ACCEPTANCE TEST PROCEDURE: T-10343
 - RdF P/N 27700-3 IS APPROVED FOR GRADE "A" SHOCK FOR MCM-1 CLASS MINE COUNTERMEASURES SHIP; PBI LETTER 9565-2614-JAF DATED 1 APRIL 1985. CONTRACT N00024-82-C-2121/072.
 - RdF P/N 27700-5 IS APPROVED FOR GRADE "A" SHOCK FOR ALL FFG-7 CLASS SHIPS BY SUP SHIP BATH LETTER FFG/9072/RLP: ged. SERIAL 254A/6139, DATED 11/10/81. PRIME CONTRACT N00024-74-C-0207
 - RdF P/N 27700-10 WITH THERMOWELL P/N 53671 IS APPROVED FOR MIL-S-901C, LIGHTWEIGHT, GRADE A, CLASS 1, TYPE A SHOCK BY DEPT OF THE NAVY LETTER NUMBER 9436/9072 SER CVN72/73-273A/178 DATED 2/4/88 CONTRACT N00024-83-C-2033.

REVISIONS				
ZDNE	LTR	DESCRIPTION	DATE	APPROVED
D		ECD 11104; ADDED -11 TO TABLE	940426	DB
D4		ECD 12454, ADDED NOTES 1, 2 & 3		
D4		NOTE 4 WAS NOTE 1 "METAL STAMP IDENT TAG WITH APPROPRIATE PART NUMBER AND SERIAL NUMBER"		
D4		NOTE 5 WAS NOTE 2 "ELECTRO-CHEMICALLY ETCH THE FOLLOWING ON SHEATH WITHIN 3 INCHES OF TIP: RdF P/N 27700-[-] TCEK-[-]-[-] TW, S/N[-]"		
E		CLASSIFICATION NO.		
B2		DELETED ALTERNATE TERMINAL BOARD CONFIGURATION DIM 3/4-24UNS-2A WAS "THREAD WITH THREAD RELIEF IN ACCORDANCE WITH THERMOWELL REQUIREMENTS"		
D1,C1		ADDED 7D NUMBER COLUMN TO TABLE I REDRAWN TO NEW CADD FORMAT DELETED DETAIL "A"		

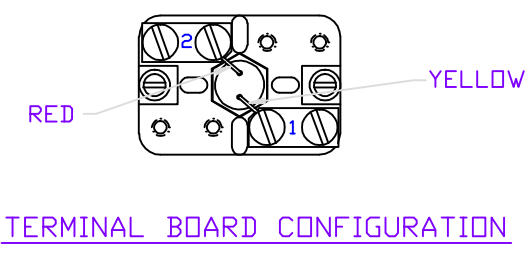
TABLE I

PART NO.	CLASSIFICATION PER MIL-T-24388 (SHIPS)	*L* DIM (INCHES)	*A* DIM (INCHES)	TEMPERATURE RANGE °F	MAX CONNECTION HEAD TEMP °F	THERMOWELL INSERTION LENGTH PER MIL-T-24388 (INCHES)	7D NUMBER
27700-1	TCEK-4-2TW	4.44	1.75	-40° TO 200°	300°	2.69	110118
27700-2	TCEK-6-2TW	6.69	4.00	-40° TO 400°	300°	2.69	110119
27700-3	TCEK-9-2TW	9.69	7.00	-40° TO 1500°	500°	2.69	110120
27700-4	TCEK-10-4TW	10.19	5.59	-40° TO 1500°	500°	4.59	110121
27700-5	-	15.37	7.00	0° TO 1500°	500°	8.37	110122
27700-6	TCEK-6-4TW	6.44	1.75	-40° TO 200°	300°	4.69	110123
27700-7	TCEK-8-4TW	8.69	4.00	-40° TO 400°	300°	4.69	110124
27700-8	TCEK-11-4TW	11.69	7.00	-40° TO 1500°	500°	4.69	110125
27700-9	-	18.62	7.00	-40° TO 1500°	500°	11.625	110126
27700-10	-	18.38	1.75	-40° TO 1500°	500°	16.63	110197
27700-11	-	18.625	6.25	-40° TO 1500°	500°	12.375	1101361

RdF CORPORATION
PROPRIETARY INFORMATION
 THE DESIGN REPRESENTED BY THIS DRAWING IS THE PROPERTY OF RdF CORP. AND IS NOT TO BE DISCLOSED WITHOUT RdF APPROVAL



FOR INFORMATION ONLY



REV	PART OR IDENTIFYING NO.	NOMENCLATURE OR DESCRIPTION	MATERIAL OR NOTE	ITEM NO.
-2				
-1				
0				

DRAWN		DATE		RdF CORPORATION	23 ELM AVE HUDSON N.H. 03051-0490
P. PELLITIER	740812				
ENGR.		DATE		TITLE	
R. GAUTHIER	761108			SPRING LOADED THERMOCOUPLE TEMPERATURE DETECTOR	
ISSUED		DATE		REV.	
K. LEITH	980714			E	
UNLESS OTHERWISE SPECIFIED					
ALL DIMENSIONS ARE IN INCHES					
REMOVE ALL BURRS AND SHARP EDGES					
TOLERANCES ON DIMENSIONS:					
.XX ± .03		ANGLES ± X		SIZE FSCM NO.	
.XXX ± .005		FRACTIONAL ± X		DWG NO.	
APPLICATION		SCALE		REV.	
		1/1		27700	
				SHEET 1 OF 1	